

Q 9 2 S T O N E

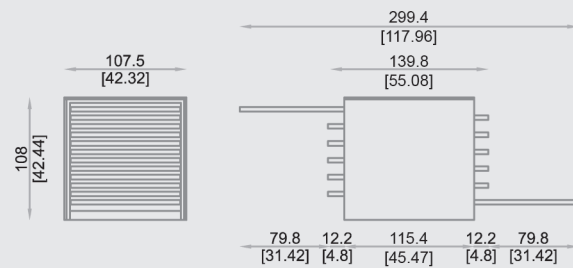
Espositore autoportante bifacciale composto di 12 telai per allestire 12 pannelli 92x92x1 cm. Completo di rivestimento nobilitato.

Double-faced self-bearing display unit with 12 frames to set up 12 panels 92x92x1 cm. With melamine coated side panel.

Beidseitig ausziehbarer selbsttragender Musterschrank bestehend aus 12 Rahmen zur Aufnahme von 12 Tafeln 92x92x1 cm. Komplet mit beschichteter Verkleidung.

Meuble à tiroirs à deux faces composé de 12 tiroirs pour exposer 12 panneaux 92x92x1 cm. Avec revêtement mélaminé.

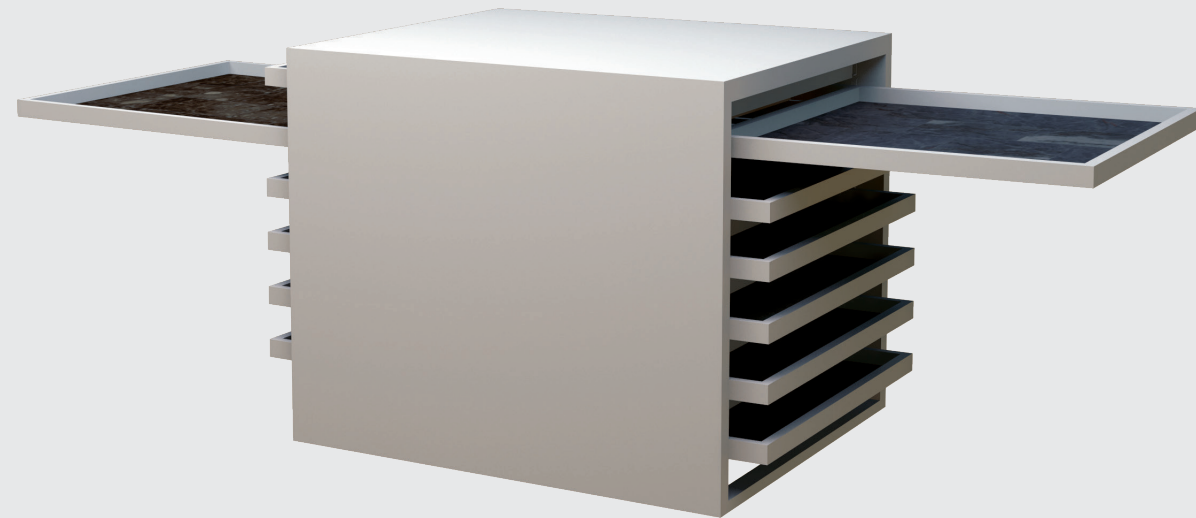
Expositor de metal, compuesto por 12 bastidores para esponer 12 paneles 92x92x1 cm. Rivestimiento de madera melamina.



12 92 cm / 36.25 inch

92 cm / 36.25 inch

A = 155 cm / 61.07 inch
B = 120 cm / 47.28 inch
C = 125 cm / 49.25 inch
260 kg



S T O N E

157M

STONE

DOORS

FINITURE